





Thanks to everyone who has supported the Black River Falls Area Foundation over the years, and special thanks for your help to our community, through the Foundation, in 2017. We have many generous people and here are some of the things your donations accomplished.

**FRIENDS of the Foundation** donate each year and 100% of these donations are awarded in grants the following year. The \$27,725 donated in 2017 will be used toward the funding of grants shown on pages 10 and 11 of this Annual Report.

**The Education Enrichment Fund** had a wonderful year in 2017. BRF-EEF is dedicated to enhancing the educational experiences of BRF School District students. It does so by funding purchases of equipment and supplies, requested by teachers and staff, which are not available through the school budget. In 2017, \$17,000 of assistance was given and this year that amount increased to \$20,000.

The big event which made 2017 a wonderful year for the BRF-EEF was **the challenge issued by Al and Jeanette Lahmayer**. They donated \$25,000 to EEF and an additional \$25,000 if BRF-EEF could match that amount in donations from the community. Donors **doubled** the challenge amount, raising \$52,771! The BRF-EEF balance now stands just short of \$500,000! Thanks to Al and Jeanette, BRF-EEF fund drive organizers, Mary Jo Radcliffe, Lori Chown, Marilyn Hagen, and all the BRF-EEF donors.

**Worker Retraining:** In January, 2018, the chief of BlackRock, the largest investment company in the world, with **six trillion dollars** of assets, announced they will be closely watching how well managers of companies, whose stocks BlackRock owns, are doing to address society's future critical issues that governments are failing to address. One of the four crucial issues is **worker retraining**. This is a major issue your Foundation has worked on, together with Western Technical College (WTC), for two years. It will continue to be a major focus for us in coming years as well.

## **In 2017, the Foundation provided 18 Technical College IMPACT Scholarships to county applicants.**

The majority were awarded to former high school graduates currently in the workforce, who recognized they needed technical education to earn good paying jobs. (See page 3.)

**Scholarships:** In 2017, we awarded \$44,750 to 32 recipients attending four year colleges, and \$7,000 to 5 students attending technical college, for a total of \$51,750 invested in the education of 37 area students. However, over the last decade or more, both tuition costs and student debt have increased significantly. Foundation Trustees and existing scholarship donors discussed these increases, and most donors agreed to increase their annual scholarship awards to \$2,000 or more. We very much appreciate the generosity of these donors, as will the future recipients. **Thank you scholarship donors!**

**A New Animal Shelter** was another 2017 Foundation focus. The Humane Society requested the Foundation's assistance with the project. More information on the animal shelter is contained on page 3. Watch our website for updates as this exciting project progresses.

**Operational Changes** are needed as the Foundation grows. A number were made in 2017.

- A new laptop was purchased. In addition, backup procedures and disaster recovery protection processes are being improved to keep Foundation records safe and secure.
- The Foundation reached out to WTC for help with the Foundation Website. Jacob McAllister, a student in WTC's web design program, used the Foundation website as his class project. He has done a phenomenal job! Our new website was operational June 1, 2018. We continue to review, modify and add information. We plan to have the project completed by August 1<sup>st</sup>. **Please remember to check it out!** A huge "Thank You" to Jacob, and to Mike Swenson of WTC for coordinating the project.

- Improving our scholarship application, review, approval and notification processes has been a Foundation focus for the past several years. This year, with a great deal of help from BRF School District Superintendent and Foundation Trustee Shelly Severson, we were able to automate the majority of the process for the first time. Students applied and submitted their applications directly on line. Members of the BRF Scholarship Selection Committee reviewed applications in a digital format, saving much paper and time for school district counseling staff. Feedback from students, school staff, and parents has been very positive. Our thanks to Shelly and staff members of the High School guidance department, Sue Leadholm and Karen Kutcher, for your dedication to this project.

Finances to support the activities discussed in this Annual Report are provided by earnings from our assets and donations from our supporters. Both were exceptionally good in 2017. **Earnings on assets for the year were \$633,000, a new record! Donations from Foundation supporters totaled over \$500,000!** Major donors who contributed to this total were Tim & Kay Finch, the Hoffman Family, Al & Jeanette Lahmayer, Leon & Betsy Janssen, Jackson County Bank and Gil Homstad. A complete list of all donations made to the Foundation, and the funds to which they were directed, can be found on page 8. **Total assets at year end, 12/31/2017, were \$5,913,000, a record high!**

A sincere THANK YOU to each and every one of our donors. We truly appreciate your support and the faith you place in the Foundation to use your donations wisely. (On page 9, see how the Foundation compares with other Non-Profit Organizations.) In 2018, the focus of the Foundation will remain on scholarships, both technical and four-year, as well as construction of the new animal shelter. These are much needed, but also expensive, projects. **Can you help? Consider donating your time, talents, or money!**





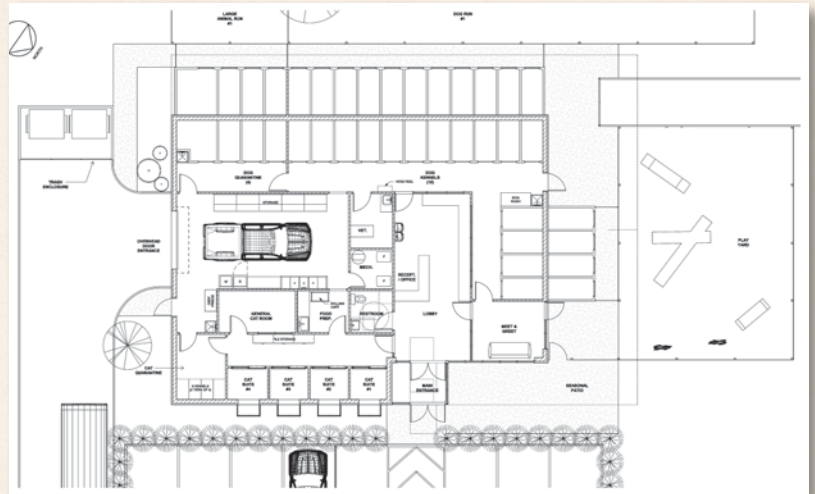
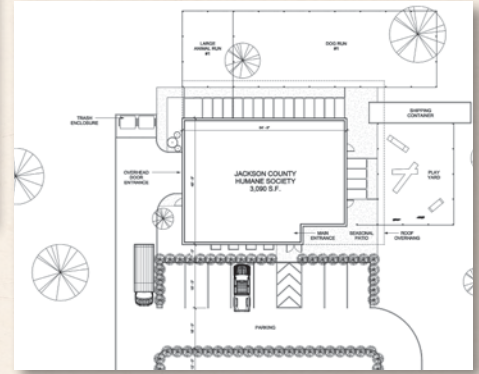
## ANIMAL SHELTER PROJECT

The Jackson County Humane Society (JCHS) Animal Shelter Project is in its final push toward approval and funding. With the help of Matthew and Lindsey (Ahl) Wilkus, of Wilkus Architects in Hopkins, MN, the project has taken on a new life. The new location for the shelter is on County K, behind the Veterans Park and across from Jackson County's Health & Human Services building. The location, building features and sensible design plan, allow for future expansion to the south end of the property if needed. In addition, this location is closer to schools and will have better visibility from Hwy 54.

The estimated cost of the building is still just that – an estimate but the formal bid process should commence by summer's end. Civil engineering started June 4th. The goal is to break ground Spring 2019.

Trustee Ashley Ahl is leading the Foundation's collaboration with JCHS to assist in their final stretch of fundraising efforts. To date, JCHS has raised \$471,000. By our best approximations, that leaves the group with \$100,000-\$200,000 left to raise. The full support of the County has been a promising turn of events and we're excited to see this project come to fruition.

Please watch the Foundation's new website for updates as this wonderful project progresses.



## FOUNDATION USES IMPACT SCHOLARSHIPS TO HELP LOCAL EMPLOYERS

### Improve the Lives of Jackson County Residents and Provide a Skilled Workforce

There is a definite shortage of skilled workers in Wisconsin. This shortage is projected to continue and it seems that in the coming years it will continue to be difficult to meet the needs of employers. In 2016, the Foundation worked with WTC Foundation to provide Impact Scholarships to working age adults and high school students from Jackson County seeking to further their education at a technical college in Wisconsin.

- **2016** – Foundation Donors contributed \$140,000 to create 35 two-year scholarships, providing each student with \$2,000 a year for two years. We are very grateful to the generous donors that made this possible.
- **2017** – Eighteen of these scholarships were awarded, 16 to working age adults and two to graduating seniors.

- **2018** – So far in 2018, 16 of the remaining 17 scholarships have been awarded. Fifteen were awarded to working age adults and one to a graduating senior. There is one scholarship still available for any student applying for admission in the Fall Semester of 2018, or Spring Semester of 2019.
- **2019** – Several Foundation Donors have expressed an interest in continuing to support this project and have given funds to create future scholarships. Thanks to their generosity we have a good start on raising approximately the same number of scholarships (17-20) for students in 2019. *If this is something you are interested in helping with, please contact the Foundation office!*

The Impact Scholarships are accomplishing two primary goals. First, meeting the demand of businesses for skilled workers helps to ensure that quality jobs and careers can remain available in our region. This both provides attractive employment opportunities for area residents, and helps attract new people to our communities, but also helps local employers find and retain skilled workers. Second, the Impact Scholarships are helping local people to acquire the skills that they need to secure a good job, build a career, and improve their lives.

*If you know a working age adult, or high school senior who would benefit from an Impact Scholarship, please invite them to contact the Foundation office. We will be happy to assist them with the application process.*



# GRANT APPLICATIONS

The Black River Falls Area Foundation welcomes grant applications from non-profit organizations serving the Black River Falls Area. The grant application period is from **March 1 through April 15**. The announcement of award recipients and the distribution of funds are done in June.

For information about grants go to [www.brfareafoundation.org](http://www.brfareafoundation.org) or contact us at:

**Black River Falls Area Foundation**

**PO Box 99**

**Black River Falls, WI 54615**

Telephone: 715-284-3113

E-mail: [brfareafoundation@centurylink.net](mailto:brfareafoundation@centurylink.net)

Or contact any member of the Foundation's Board of Trustees.

# FINANCIAL STATEMENT

(For the years ending December 31, 2016 and 2017)

REVENUE	2017	2016
Contributions	\$ 542,184	\$ 381,285
Investment Return	\$ 633,246	\$ 278,718
<b>TOTAL REVENUE</b>	<b>\$ 1,175,430</b>	<b>\$ 660,003</b>
EXPENDITURES		
Grants	\$ 224,022	\$ 236,350
Scholarships	\$ 127,750	\$ 105,250
Support Services	\$ 41,573	\$ 37,847
<b>TOTAL EXPENDITURES</b>	<b>\$ 393,345</b>	<b>\$ 379,447</b>
Change in Net Assets	\$ 782,085	\$ 280,556*
Net Assets at Beginning	\$ 5,131,426	\$ 4,850,870*
<b>NET ASSETS AT YEAR END</b>	<b>\$ 5,913,511</b>	<b>\$ 5,131,426</b>

\*Modified by Accountants

# DONOR ADVISED, SPECIFIED TERM & SCHOLARSHIP FUNDS

## Donor Advised Funds

### FAMILY FUNDS

- James & Carol Dougherty Family Fund
- Tim & Kay Finch Family Fund
- Peter & Jone Hoffman Fund
- Gil & Alice Homstad Fund
- Mary Van Gorden Charitable/Library History Room Funds

### MEMORIAL FUNDS

- Mike & Mona Anderson Memorial Fund
- Kay Brauner Memorial Fund
- Stanley Held Memorial Fund
- Erwin & Thelma Homstad Memorial Fund
- Grace Webb Memorial Fund
- Katherine Wold Memorial Fund

### COMMUNITY FUNDS

- Alma Center Area Community Fund
- Black River Area Youth Fund
- City of BRF – Field of Honor Fund
- City of BRF – Public Library Fund
- Developmental Disabilities Fund
- Foundation Trail Maintenance Fund
- Hoffman Aquatic Park Maintenance Fund
- Incubator Economic Development Fund
- Lunda Community Park Maintenance Fund
- Mills Park Maintenance Fund
- Rotary Skate Park Maintenance Fund
- Skyline – Clubhouse/Golf Course/Legacy Funds

### ORGANIZATION FUNDS

- Animal Shelter Project
- Boys & Girls Club Fund

- BRF Educational Enrichment General/Music/M.C.Schmallenberg Funds
- BRF Rotary Club Fund
- Jackson County Humane Society Fund

### LOCAL BUSINESS COMMUNITY SERVICE FUNDS

- Black River Memorial Hospital Fund
- Hoffman Construction Fund
- Jackson County Bank Fund

## Scholarship Funds

### CREATED BY ORGANIZATIONS & BUSINESSES

- BRF Alumni Association Scholarship Fund
- BRF High School Store Scholarship Fund
- Jackson County Bank Scholarship Fund
- Krohn Clinic Physicians Scholarship Fund
- Lions/Rotary Scholarship Fund

### CREATED BY INDIVIDUALS & FAMILIES

- David & Marilyn Hoffman Scholarship Fund
- Gerald & Nancy Laabs Scholarship Fund
- Mary Perry Fine Arts Scholarship Fund
- Elizabeth Janssen Nursing Scholarship Fund
- Gene & Judy Ransom Scholarship Fund

### MEMORIAL SCHOLARSHIPS

- Allan Brenengen Memorial Scholarship Fund
- Thomas R. Gilles Memorial Scholarship Fund
- Don Halverson Memorial Scholarship Fund

- Duane & Lavina Hoffman Memorial Scholarship Fund
- Alice Homstad Memorial Scholarship Fund
- Leland & Jeanette Larson Memorial Scholarship Fund
- Ralph & Alice Lund Memorial Scholarship Fund
- Kelly Mauck Memorial Scholarship Fund
- Philip & Aldena Meyer Memorial Scholarship Fund
- Rick Millis Memorial Scholarship Fund
- Dean Nortman Memorial Scholarship Fund
- Meghan Powell Memorial Scholarship Fund
- Lt. Terry Preston Memorial Scholarship Fund
- Dustin Rozmenoski Memorial Scholarship Fund
- Kristin Wood Fine Arts Memorial Scholarship Fund

## Specified Term Scholarship Funds

- Richard Hilliker Scholarship Fund
- Robert (Knuckles) Johnson Memorial Scholarship Fund
- James Jr. & Anna Klir Memorial Scholarship Fund
- Pearl (Toddy) Porath Memorial Scholarship Fund
- WTC Impact Scholarship Pass Through Fund

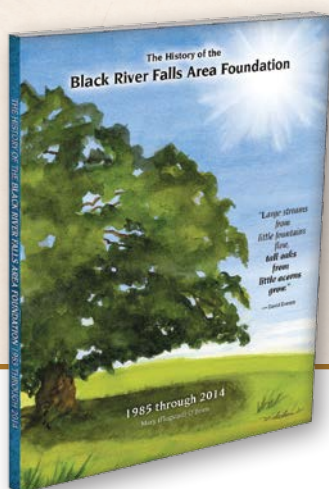


# MISSION STATEMENT

The mission of the Black River Falls Area Foundation is to enhance the quality of life in the Black River Falls Area. We work to realize that goal with the support of individuals, families, businesses and organizations that share this commitment. We achieve this by:

- Providing a vehicle for donors with diverse community interests;
- Protecting donations through prudent investing and stewardship;
- Serving as a resource and catalyst to accomplish community projects;
- Expanding our communities' endowment by encouraging philanthropy.

We address a broad range of community goals rather than focusing on one particular issue. In this way, we are able to meet changing needs and provide support to the people who live and work in the Black River Falls Area.



The Foundation's History Book is available at no cost. Contact Julie Murray at the Foundation office [brfareafoundation@centurylink.net](mailto:brfareafoundation@centurylink.net) or 715-284-3113.

## BOARD OF TRUSTEES

The Board of Trustees is the governing body of the Black River Falls Area Foundation. It is responsible for overseeing the investment of donor funds and the distribution of grants in accordance with donors' wishes. Trustees serve without compensation and are selected because of their judgment, integrity, community involvement and understanding of philanthropic needs. They serve a three-year term of office with a maximum of three consecutive three-year terms. The Chairman, Vice Chairman and Treasurer can serve additional terms.



Gil Homstad\*  
Chairman



David Hoffman\*  
Vice Chairman



Kay Finch  
Secretary



Michael Dougherty  
Treasurer



Ashley Ahl



Jim Bible



Brad Chown



Kristi Hanson



Mike Mahan, MD



Shelly Severson



Dennis Young



Julie Murray,  
Executive Director

## FORMER TRUSTEES

\*Originating Trustee

Todd Anderson  
Ruth Buswell  
Eric Chrisinger  
Ron Danielson  
John Hagenbrock  
Judy Hansen  
John Hogden

Jerry Kitowski, MD  
Al Lahmayer\*  
Jean Lee  
Tom Lister\*  
John Lund\*  
Sue Michaelson  
David Millis

Mary O'Brien  
Dennis Richards\*  
Dale Sherman\*  
Fred Stai  
Tom Mills—  
Executive Secretary  
from 1985 to 1999



# 2018 “SPECIAL PEOPLE” AWARD

## Al & Jeanette Lahmayer Award Recipients

The Trustees of the Foundation have selected Al and Jeanette Lahmayer as recipients of this year's Special People Award. Al and Jeanette have been true partners in their life journey, their personal lives, in part of Al's professional career, and in their community endeavors. We thought you would enjoy learning about their life history in Black River Falls.

Now in their tenth decade, Al and Jeanette's early years saw them entering the age of self-awareness in the great depression of the thirties, Jeanette in Kentucky Appalachia and Al in Milwaukee. Their lives were much impacted by WWII. Al was inducted into the Army in the later stages of the War, and Jeanette went to work as a clerk typist on an Army base that Al met his blue-eyed Kentucky Wonder Woman!

Their courtship lasted several years, while Al pursued first his college degree and then graduate school in Optometry. Together, their life ambition was a modest one. Marriage, a family, and a nice home – the American dream. Al had chosen Optometry as a career, because he could be a solo practitioner in a small town, something that appealed to both he and Jeanette. “I often say, I've done two small things in my early life that were the key to everything, I chose Optometry for a career, and I asked Jeanette to be my wife and partner.”

In the rest of this article, Al shares their story and reminisces about their community involvement over the years.

We got married midway through Optometry school in Chicago. After graduation, my first job offer arrived in the form of a phone call from Dr. Robert Krohn in Black River Falls. We took the “400” train to Merrilan where we were met by a group including Dr. Bob and Tom Mills. A bit of Kentucky drawl and a

smile from Jeanette, and they hired both of us. Jeanette as a secretary, and me as the guy who was with her.

Ten years later, the Krohn Clinic reorganized, forming a medical partnership. I purchased the eye care portion of the practice and began my independent practice. I built my first Eye Clinic on the corner of 2<sup>nd</sup> and Main Streets. Thirty years later, I had the same architect design the Eye Clinic next to the Hospital for myself and my son, Bruce, who was now my partner. Sixteen years later, after forty-six years of practice, I retired. Later, Dr. Bruce merged the practice with the Gundersen Clinic and just recently began a well-earned retirement himself.

When asked to be an officer in the Wisconsin Optometric Association, I saw an opportunity to repay something to Optometry, which had done a lot for me. In 1973, Optometrists were not yet allowed to use drugs in their practices. This was handicapping our ability to diagnose pathology, and went against the public's best interest. Along with other doctors, we began the effort to change this Wisconsin law. It took five years. In 1978, the Governor signed a Bill rectifying this situation at our convention. Also that year, I had the honor of being President of our Association and being recognized as “Optometrist of the Year”.

In 1952, we were blessed with our first son, Bruce. In 1953, Mark joined our family and in 1960, our daughter, Ruth Ellen, completed our dream team. Our second son, Mark, was a beautiful baby, but when he was about six months old, we noticed his motor development was behind schedule. This is when we learned that Mark would be a special needs child. Since that day, a portion of our life has been involved with the field of people with disabilities. At the time,



Jeanette & Al Lahmayer

there were no services to help these folks. Wisconsin had no chapter of laws that covered disabled citizens, and Jeanette and I were asked to do a survey about the needs of the disabled in Jackson County. It wasn't until 1960 when John F. Kennedy, who had a developmentally disabled sister, was elected President that national attention began to focus on the matter.

Jeanette and I wanted to get our kids out into the country, so in 1965 we sold our home in town and moved to a 180-acre farm. Two years later, Jeanette thought it was time to replace our decrepit farm house. She picked a quiet, private spot with a beautiful view for our new home. The site was some distance from the main road and our driveway cost more than the original farm did! We designed our dream home and as with the Eye Clinic, I was the general contractor. This was our home for over fifty years until we recently moved into Spaulding Place. In addition to the Eye Clinics and our home, Jeanette and I built a number of other buildings together including a small apartment building, and did several renovation projects together.

When Mark was nine years old, he had not yet been to school, as special education did not exist at that time. Jeanette took it upon herself to meet with then school Superintendent, Mel Schmallenberg about the situation. Mel knew Mark and believed he was certainly trainable and most likely educable. Superintendent Schmallenberg stated “We should have a class for these kids”. In 1962, a class was started and taught by a former one-room school teacher, who did a marvelous job. Mark was the classes first pupil. This was the beginning of Special Ed in the Black River Falls school district and eventually led to the Special Ed teachers and classes we know today. More than fifty years later, Jeanette and I honored Mr. Schmallenberg's foresight by donating \$50,000 to a designated sub-fund of the BRF Education Enrichment Fund, managed by the BRF Area Foundation.



Al's son, Dr. Bruce Lahmayer, joined the optometry practice at the Lahmayer Eye Clinic.



Al raised cattle on his 180-acre farm along with running a successful eye clinic.



Mark lived at home until he was forty-two. He had seen his brother and sister leave to live their lives and he wanted to be on his own. At the same time, Jeanette and I had the concern universal to parents of children with disabilities, "Who will look after him when we are gone?" Jeanette and I developed a plan to build a special home for Mark and some of his friends where he could live permanently. The project involved many steps. (1) A non-profit organization called Halcyon (meaning tranquil or peaceful) Habitat was formed. (2) Application for IRS approval for a 501(c)3 designation was obtained. (3) Architect Curt Biggar, who had known Mark since his birth, donated his professional services. (4) The city of BRF donated the building site. (5) Jeanette and I funded the project with much of our retirement savings. In 1996, Halcyon House, 745 N. 8<sup>th</sup> Street was completed. Mark and his friends each have separate apartments, and the project was a huge success.

In the early years, while working at Krohn Clinic, I often went to Neillsville to play golf with then-Clinic Manager Bill Wilcox. When we began we were not very good at the game. We played for years and gradually we got worse! Bill and I were golf partners for fifty-eight years until Bill passed away. Over the years Bill and I talked about trying to start a golf course in Black River Falls. That idea was the seed that eventually grew into the Skyline Golf Course. Bill was President in 1956 during the construction of the course, and I was the President the following year when the course opened. Jeanette was secretary of the BRF Recreation Association when they donated the property for the golf course to the city and as an officer, her name is on the original transfer deed. Today, Skyline is much more than a golf course. The beautiful clubhouse (for which Milt Lunda was a major donor) is a community center where we hold our celebrations, our wakes and many of the activities that make us a community.

In 1985, when Gil Homstad was President of the BRF Rotary Club, he suggested a project that is now a legend. Gil suggested BRF should have an Area Foundation. He asked myself and other Rotarian members to help him with this project. BRF became the smallest city in the U.S. to have such a Foundation! I served on the board of Trustees for nine years, and during that time noticed that



*Al and Jeanette's wedding day April 19, 1950 in Chicago, IL.*

many requests were from our school district, but demand far exceeded available grant funds. I had the idea to create a separate designated fund, as part of the Foundation, to be used only for the BRF School District. This fund became known as the BRF Education Enrichment Fund and is managed by the Foundation. The BRF-EEF has its own separate Board of Directors, manages its own fund-raising, and accepts and awards its own grant applications. This fund now has a balance of almost \$500,000 and is a great help to our class room teachers.

Over the years, Jeanette and I have worked and donated to numerous community projects, and continue to do so. Two years ago, I gave a speech at the 20<sup>th</sup> anniversary of the Black River Correction Institution. I enjoyed telling the story of how a breakfast conversation, between Tom Mills and I at the Country Café, led, after several years, to the location of a medium security prison in BRF. This facility now provides good jobs for more than 300 residents of the area with no negative effect on our community.

Jeanette and I would like to sum it up this way; there is a great deal to like about this beautiful part of the "Driftless Area" we live in. It is enhanced by traditional community generosity led by several generous philanthropists among us. Jeanette and I just followed their lead in a much smaller way, as we were able to do, and as many in our community do. We came here in 1951 in a 1936 Plymouth with \$500, a clock radio and ambition. We've lived the American dream, and as one of my old bridge club buddies said "You did it in spades." Spades is always best.

Al provides a wonderful, colorful story of his and Jeanette's lives in Black River Falls. However, when reviewing this article, Foundation Trustees felt Al was being very modest and had several additional comments to make.

- In addition to being one of the originators of the original nine-hole Skyline golf course, Al continues to support the golf course. Recently



*Jeanette worked along side her husband, Al, at Lahmayer Eye Clinic for many years.*

a major fund raising drive was held for the Skyline Golf Club. While the golf course itself was profitable, the clubhouse, used by organizations and individuals for hundreds of events each year, operated at a loss. When the Lahmayers were asked for a donation of \$20,000 (the maximum being solicited), Al raised the ante by stating he and Jeanette would donate \$50,000 if others would do the same! Others did, and the Lahmayers generous challenge resulted in \$250,000 being donated by five families.

- In addition to Halcyon House, the Lahmayers participated in MANY activities to assist those with disabilities, including both financial assistance and assistance with buildings to provide services for special needs individuals.
- When Al comments that the balance of the BRF-EEF fund is now close to \$500,000, he fails to mention that this is in large part a result of the Lahmayer donation challenge done last year. Al and Jeanette generously donated \$25,000 to the fund, with a challenge that they would donate an additional \$25,000 if the community would match that amount. A tremendous fund raising effort was put forth and the community responded very generously, far exceeding the \$25,000 goal.
- Al briefly alludes to his involvement in getting a correctional facility located in BRF. In reality, Al was one of three people responsible for bringing this facility and the subsequent jobs to our community. Al Lahmayer, Tom Mills and then-State Senator Rod Moen spearheaded this project and the results to our community have been immeasurable.

*Thank you Al and Jeanette. Your bridge buddy is correct - YOU DID IT IN SPADES!*

#### **Previous "Special People" Award Recipients:**

<b>2015</b>	<b>Bee Herzberg</b>
<b>2016</b>	<b>Peter &amp; Jone Hoffman</b>
<b>2017</b>	<b>Bill Millis</b>



# THANK YOU! FUND DONATIONS (June 1, 2017 to May 31, 2018)

## Alma Center Area Community Fund

- In 2017, donors gave \$7,920 to the Alma Center Area Community Fund. These donations have been acknowledged directly by the Alma Center Area Community organization. Thank you to all who have and continue to support this worthwhile project.

## Alma Center/Humbird/Merrillan Education Enrichment Fund

- In 2017, donors gave \$5,324 to the ACHM Education Enrichment Fund. These donations have been acknowledged directly by the ACHM-EEF committee. Thank you to all who have and continue to support this worthwhile organization.

## Mike & Mona Anderson Memorial Fund

- AXA Financial (*In Honor of Todd Anderson*)

## BRF Area Foundation General Fund

- Jon & Maureen Homstad (*In Memory of Gay Gardipee*)
- Richard & Sara Larson (*In Memory of Lillian Stetzer & Vernon Jacobson*)
- Link Media Wisconsin
- Ann Peterson

## BRF-Education Enrichment Funds

- In 2017, donors gave \$166,716 to the three BRF Education Enrichment Funds. These donations have been acknowledged directly by the BRF-EEF committee. Thank you to all who have and continue to support this worthwhile organization.

## Kay Brauner Memorial Fund

- Mike Brauner

## Finch Family Fund

- Timothy & Kay Finch

## Foundation Trail Maintenance Fund

- Black River Memorial Hospital (*Employee Dress Down Day*)
- Dr. Jerry & Lori Kitowski

## Hoffman Aquatic Park Maintenance Fund

- David & Marilyn Hoffman

## Hoffman Construction Fund

- Hoffman Construction Company

## Mills Park Maintenance Fund

- John & Nancy Howard

## Skyline Funds

- In 2017, donors gave \$91,675 to the three Skyline Funds. These donations have been acknowledged directly by the Skyline committee. Thank you to all who have and continue to support this worthwhile organization.

## Grace Webb Memorial Fund

- Jane E. Lokken
- Dennis & Kathleen Racki
- Beryl W. Spencer
- Gladys Webb
- In Memory of Betty Lyons*
  - Carol Erbe
  - Jane E. Lokken
  - William & Bonnie Love
  - Deborah Metz-Iannucci
  - Howard & Jana Nemenoff
  - Susanne Quattro
  - Gladys Webb

# SCHOLARSHIP FUND DONATIONS (June 1, 2017 to May 31, 2018)

## BRF Alumni Scholarship

- BRF Alumni Association
- Duane Bowen
- Patty A. Iverson
- Douglas & Barbara Radke
- In Memory of Dorothy Fields*
  - Anne Fields
  - Darcy & Vicki Fields
  - Clarice Franke
  - James & Mary Harrison
  - Nancy Kerkvliet
  - Jack & Mary Kins
  - Nyla Musser
  - John & Darlene Sneiders

## BRF Area Foundation Annual Scholarships

- Ellen Gee Relyea

## BRF HS Store Scholarship

- BRF HS Activity Fund

## Richard Hilliker Scholarship

- Mark Hilliker
- Kristin Hilliker

## Alice Homstad Memorial Scholarship

- John & Nancy Howard

## Jackson County Bank Foundation Alumni Scholarship

- Jackson County Bank

## Elizabeth Danielson Janssen Nursing Scholarship

- Leon & Betsy Janssen

## Robert (Knuckles) Johnson Memorial Scholarship

- Hoffman Construction Company

## James, Jr. & Anna Klir Memorial Scholarship

- Rose Ann Klir

## Krohn Clinic Physicians Scholarship

- Krohn Clinic
- Dr. Michael & Tina Mahan

## Gerald & Nancy Laabs Scholarship

- Jay & Katherine Laabs

## Lions/Rotary Scholarship

- BRF Lions Club
- BRF Rotary Club

## Philip & Aldena Meyer Memorial Scholarship

- Mary J. Goens
- Dave & Luane Meyer
- Marlene Meyer

## Rick Millis Memorial Scholarship Fund (In Memory of Bill Millis)

- Luann Aschenbrenner
- Bob & Anna Becker
- Dawn Donahue Benning
- Terry & Kathleen Blaken
- Dr. Eston & Lynda Garden Cameron
- Curtis & Judith Collins
- Jim & Doris Dingeldein
- Mike & Cindy Dougherty
- Dennis & Debbie Eberhardt
- Kathleen Heinz
- Brian & Brenda Hesse
- David & Marilyn Hoffman
- Ronald & Judy Holmes
- Carl & Rhonda Holmquist
- Larry & Betty Janke
- Peter & Anne Johnson
- Wayne & Shawn Johnson
- Earl & Linda Krahn
- Robert & Mary Krueger
- Jay & Katherine Laabs
- Nancy Laabs
- Richard & Judy Lee

- Michael & Betty Lind
- Laurel Sackett Meek
- Robert & Loretta Miazga
- Robert Mubarak
- Barry & Julie Murray
- Nyla Musser
- Judy Radcliffe
- Douglas & Barbara Radke
- Robert & Candace Reed
- Margaret Rewald
- Andrew & Brenda Schlafer
- George & Sue Schwab
- Tom & Kathy Tomter
- Troy & Marianne Torkelson
- Tim & Sandy Tranberg
- Juleen Tredinnick
- Ed & Diane Vlach
- Harvey & Diane Wood
- Ann Zillmer
- Kenworth Division
- Eau Claire Co-operative Oil Company
- Paccar Financial Corporation
- Wifli Accounting Firm

## Dean Nortman Memorial Scholarship

- Margaret Mattson

## Dustin Rozmenoski Memorial Scholarship

- Harold & Donna Frett



# GIVING THOUGHTFULLY

The Black River Falls community has a rich history of coming together to support its own. One only has to drive through town to appreciate the many amenities we have, attend the Senior Award Night to be awed by the number of local scholarships awarded, or simply attend the Friends of the Foundation Luncheon, to recognize the generous spirit which our community does so well.

"When we give cheerfully and accept gratefully, everyone is blessed."—Maya Angelou. This quote seems a fitting way to begin when talking about the Black River Falls Area Foundation (BRFAF). The Foundation, which has provided grants to over 100 different community organizations, is completely funded by the willingness of our community to give cheerfully, and as a result, everyone within the community is blessed by the outcome.

There is never a shortage of charities and organizations in need of funding, and when one chooses to give, it is important to give thoughtfully. One of the most critical considerations when choosing which organizations to support is the efficiency with which the charity will use your donation to fund the programs you want to support.

While this may seem like an overwhelming task for someone that simply wants to do good for others, there are many organizations that can help them review charities and assist with prioritizing both the efficiency of the organization, as well as the alignment with their interests. Charity Watch, [www.charitywatch.org](http://www.charitywatch.org), founded 25 years ago as the American Institute of Philanthropy, is America's most independent, assertive charity watchdog, and has developed a simple rating system and standards by which all charities can be measured and compared.

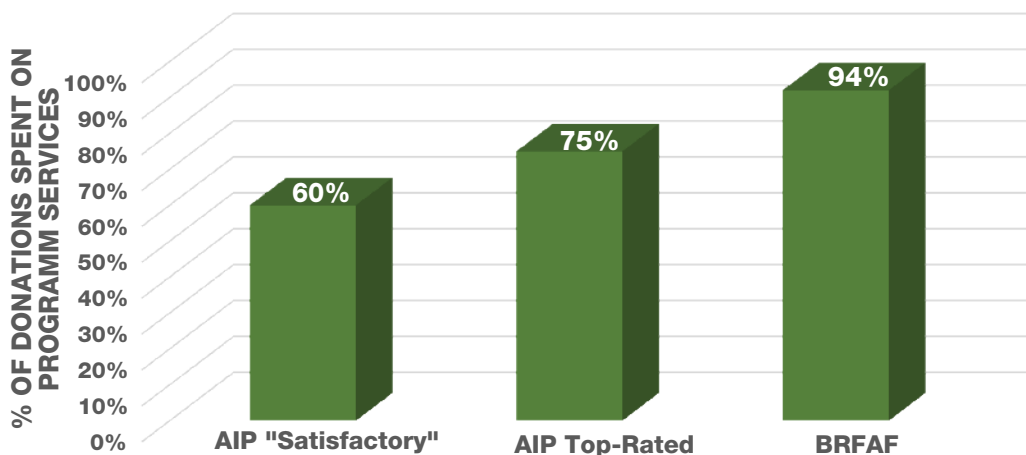
The Black River Falls Area Foundation strives to be as transparent as possible in its work. While we are not large enough to be on the Charity Watch website, we most definitely use the established standards to continually monitor our efficiency. The Foundation operates through its Board, which is a diverse group of Trustees all having the best interests of our community in the forefront.

While everyone would love to believe that 100% of each donation goes directly toward meeting the goals of the organization, this is not possible. The American Institute of Philanthropy's (AIP) Top-Rated organizations keep overhead at 25% or less of their funds raised.

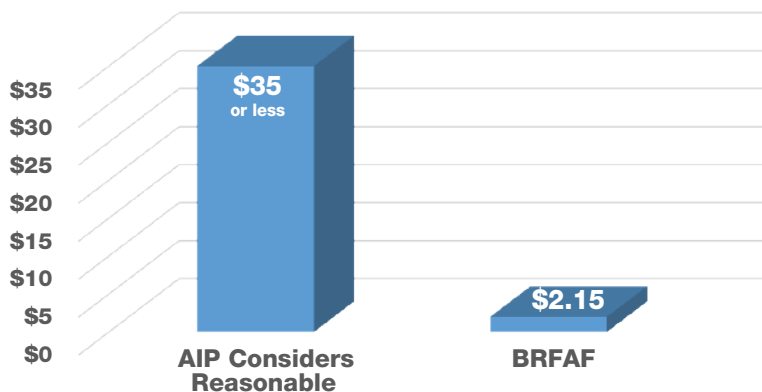
For the past six years, the BRFAF has operated with an average 6% overhead costs, an exceptional value, which ensures that 94% of all resources are available for grant and scholarship programming!

Another metric that is often utilized when evaluating the efficiency of a charity is the cost of raising \$100. The AIP considers spending \$35 or less for every \$100 raised as a reasonable fundraising cost.

## Charity Efficiency Based on Program Services vs. Overhead Costs



## Cost to Raise \$100



Again, the BRFAF would receive an A+ rating, spending an average over the past six years of a mere \$2.15 for every \$100 raised.

These charts visually represent the true value of a donation to the Black River Falls Area Foundation when compared to hundreds of national charity organizations.

The Foundation takes the responsibility to invest its money wisely and manage the donations carefully, very seriously. Doing so allows the Foundation to feel confident that the generosity of the donors is invested into the community in the most thoughtful ways possible. Thank you for your past donations and for considering the Black River Falls Area Foundation for your future investments in our continuing efforts to the community!



# 2018 GRANT RECIPIENTS

## \$149,000 awarded to 23 Local Non-Profit Organizations

**Alma Center-Humbird-Merrillan School District; Jr. & Sr. High Schools:** replace Band Instruments. *Fully sponsored by the Mary Van Gorden Charitable Fund.*

**Activ (f/k/a Riverfront):** toward capital improvements of the main entrance at the Black River Falls facility. *Partially sponsored by the Developmental Disabilities Fund.*

**Blair-Taylor School District; Band Department:** toward the purchase of a Timpani drum set to replace the 30-year-old set. *Fully sponsored by the Katherine Wold Memorial Fund.*

**Bolton Refuge House; Jackson County Outreach:** create a Laundry Facility for the Transitional Living Program. *Fully sponsored by the Gil & Alice Homstad Fund.*

**Boys & Girls Club of Jackson County:** toward enhancement of the Academic Success programming. *Fully sponsored by the Peter & Jone Hoffman Fund.*

**Black River Falls School District; Nexxus Program:** toward construction of a school garden, pond and gazebo at the Gebhardt school. *Fully sponsored by the BRF Youth Fund.*

**Black River Falls School District; Staff Training:** offer the training program "7 Principles of Positive Psychology that Fuel Success and Performance at Work" to staff who face many challenges being in high stress service careers. *Fully sponsored by the Katherine Wold Memorial Fund.*

**City of BRF; Police Department:** to purchase a Smart Car for patrolling the Foundation Trail, Local Parks, Golf Cart Paths. *Fully sponsored by BRF Area Foundation's General Fund.*

**City of BRF; Public Library:** to support the Summer Reading Program for youth, and to purchase Legos for the Lego Club II. *Fully sponsored by the BRF Rotary Club Fund.*

**Friends of the Black River Falls Library:** materials for the adult literacy program, to sponsor "2019 Jackson County Read" program, and toward an indoor golf tournament for children during summer programs. *Fully sponsored by the Jackson County Bank Community Service Fund.*

**Hixton Volunteer Fire Department:** toward the purchase of new Self-Contained Breathing Apparatus Packs. *Partially sponsored by the Tim & Kay Finch Family Fund.*

**Jackson County Emergency Medical Association:** to purchase 7 ResQ CPR Systems (one for each rescue vehicle) with carry cases. *Fully sponsored by the Mary Van Gorden Charitable Fund.*

**Jackson County Division of Public Health; Car Seats:** to purchase car seats for low income families and to train JCHHS employees on the proper installation of the car seats. *Fully sponsored by the Katherine Wold Memorial Fund.*

**Jackson County Division of Public Health; Food Safety:** to provide classes to educate people serving food to the public that are not required to have a license, such as at sporting events, churches, fraternal groups, etc.

**Jackson County Humane Society:** toward construction of a new animal shelter. *Partially sponsored by the James & Carol Dougherty Family Fund.*

**Jackson County Interfaith Volunteer Caregivers:** toward helping create awareness of the new "Time for You" program. *Fully sponsored by the Stanley Held Fund.*

**Lutheran Social Services; Wazee House:** to remodel the lower level of Wazee House to create and furnish a group room conducive to facilitating group curriculum sessions with clients. *Fully sponsored by the Erwin & Thelma Holmstad Memorial Fund.*

**Skyline Golf Course:** toward expenses incurred when the HVAC system at the Clubhouse was replaced. *Fully sponsored by the Incubator Development Fund.*

**Together for Jackson County Kids - Strengthening Families Program:** for meals, travel and advertising for the twelve-week program. *Fully sponsored by the Peter & Jone Hoffman Fund.*

**Town of Brockway; Brockway Town Park:** to purchase a surveillance system. *Fully sponsored by the Gil & Alice Homstad Fund.*

**Village of Alma Center; AC Community Fire District:** to update the lighting on the Fire Trucks. *Fully sponsored by the Tim & Kay Finch Family Fund and the Mary Van Gorden Charitable Fund.*

**Village of Merrillan; First Responders:** toward replacement of their 1998 Ambulance. *Fully sponsored by the Tim & Kay Finch Family Fund.*



2017 Grant Recipient GreenLifeXpo: Community Educational Event



2017 Grant Recipient BRF Public Library: Children's Area Computers



2017 Grant Recipient TFJCK Jackson In Action: Pace & Pedal Duathlon



# 2018 GRANT RECIPIENTS



2017 Grant Recipient GreenLifeXpo: JC 4-H Kids Green Zone Workshop



2017 Grant Recipient Library History Room: Doing Research Workshop



2018 Grant Recipient Friends of the Library: Adult Literacy Program

## Donor Advised Grants \$123,000 Awarded to 10 Recipients

### Foundation General Fund

- Jackson County Historical Society, and
- Friends of the Black River both at the request of donors John & Nancy Mills Howard.

### Hoffman Aquatic Park Maintenance Fund

- City of BRF for replacement of the Swimming Pool furnace.

### Peter & Jone Hoffman Fund

- Boys & Girls Club of Jackson County for operating expenses in Black River Falls.
- BRF Area Foundation for 2018 Grants.
- BRF United Methodist Church for general operations.
- Gateway Council: Boy Scouts for Camp Decorah.
- Hazelden Foundation for admission payments for those in financial need.

### Mary Van Gorden Library Endowment Fund

- BRF Library History Room for operating expenses.

### Grace Webb Memorial Donor Advised Fund

- Jackson County Elementary School Libraries for materials to enhance children's interest and love of reading.

## Alma Center Area Community Grants

### \$7,881 Awarded to 5 Recipients

#### Alma Center Fire Dept:

- Vehicle & Building entry equipment, Station 2 – Humbird Truck

#### Alma Center First Responders:

- Purchase 4 new pager/chargers to update technology

#### Town of Garden Valley

- Funding for Commemorative Book, 150<sup>th</sup> Anniversary Fund Advertising, Refreshments

#### Lincoln High School

- Upgrade/replace musical instruments for Jr. /Sr Band Department

#### Lincoln Elementary

- Purchase five iPads for use with STEAM robots

## BRF Education Enrichment Grants

### \$20,278 Awarded to 18 Recipients

#### Band

- New Concert Tuba

#### Elementary/Middle

- Middle School Choir Grant

#### Forrest Street

- Nonfiction Book Area For Eager Readers
- Update Social Manipulatives for Students
- Nonfiction Leveled Books for First Grade Team
- Lego Learning

#### Gebhardt

- Wood Shop

#### High School

- Implementing the 8 Mathematical Standards
- Swivel Robotic Platform Video
- Anti-Distracted Driving Campaign
- FCCLA Empty Bowls
- Phy Ed Audio Visual Cart

#### Middle/High Schools

- Spanish Library

#### Red Creek

- 5th Grade Math Manipulatives
- Alternative Seating for Wobble Chairs
- 3 Sisters Garden
- Flexible Seating Choices
- Sensory Room



# NEW SCHOLARSHIP FUNDS CREATED



From left to right: Daniel Hilliker, Richard Hilliker, Kristin Hilliker, and Mark Hilliker.

## Richard L. Hilliker Scholarship Fund

Richard L. Hilliker turned 80 on April 9, 2018. In honor of this milestone, a gathering of friends and family took place at the Del Bar in Lake Delton, to celebrate. The evening offered a chance for storytelling and the sharing of memories.

Richard's children and their families also decided to give him a very special gift. They took advantage of one of the Foundation's new options, Specified Term Scholarships, (See article below) to create a scholarship in his honor. Next year, a scholarship in the amount of \$2,000 will be given to a graduating Senior or an Alumni of Black River Falls High School who is pursuing a career in Natural Resources, Environmental Science or Conservation. The children's intention is to offer this scholarship annually in perpetuity.

Congratulations to Richard and THANK YOU to his children for commemorating the occasion by giving back to our community and for creating a Specified Term Scholarship!

## Donors Take Advantage of New Options For Scholarship Donations

In addition to our Traditional Scholarship Fund the Foundation now offers two additional scholarship donation options:

- **Foundation Scholarship Fund-** Donors who desire to help with the rising costs of education may make a one-time donation of \$100 or more to this fund. Please specify a Jackson County school if other than BRF.
- **Specified Term Scholarship-** This fund is designed for donations in amounts ranging from \$2,000 to \$24,000. Scholarship amounts are preset at \$2,000 per year and the length of the scholarship term will be determined by the amount of the donation, or the scholarship may be funded annually. Donors creating this type of scholarship fund may name the fund, perhaps in honor of a loved one or as a memorial. In addition, donors may be involved in establishing the scholarship's requirements and selection guidelines if they so desire.

Contact the Foundation for more information about these new options.

## Gerald & Nancy Laabs Scholarship Fund

Jerry grew up in Curtis, Wisconsin, the son of a cheesemaker and a school teacher. Throughout his life, Jerry would often mention the Laabs Cheese Factories. Later in life, he and Nancy spent many hours researching the Laabs family genealogy. Jerry graduated from Tomah High School and UW-LaCrosse with a degree in Business and History. He remained a history buff throughout his life, focusing on the Civil War and the various battles that were fought during that time period. Jerry graduated from UW-Madison Law School in 1969. He was and remained an avid Wisconsin Badger sports fan. Jerry made many trips to Madison with his good friends, and as his boys grew it was common for Jerry, Marc and Jay to enjoy crisp fall afternoons watching the Badgers at Camp Randall. Jerry practiced law in Black River Falls for 32 years. He was committed to and cared about his clients. Many of his clients credited their success in part to Jerry's advice and services. Jerry served as Jackson County Circuit Court Judge from 2002-2008. Judge Laabs genuinely cared about people and, knowing his decisions affected the lives of those before him, was thoughtful and deliberate in every decision he made. He also worked hard to develop and implement the County's first treatment court program. Judge Laabs

was very proud of this accomplishment and under his oversight, the treatment court was a success.

Nancy grew up in Black River Falls, the daughter of Lloyd and Virginia German. She graduated from Black River Falls Senior High School and UW-Eau Claire with a degree in Social Work. She was a social worker at Jackson County Health and Human Services, Family Heritage Care Center, and Ho-Chunk Nation Child and Family Services. Nancy is proud of the work her colleagues and she did to assist many people who were developmentally disabled move out of institutions and into their own homes with supportive services. She worked hard to enable people who were frail and elderly to remain living in their homes.

Jerry and Nancy raised two boys, Marc and Jay. It is said of most parents that their children are their pride and joy – that is an understatement for Jerry and Nancy. They thoroughly enjoyed raising their sons. Both Marc and Jay graduated from Black River Falls Senior High School. Marc and his wife, Amy, have two children: Beckett and Tatum. Jay and his wife, Katherine, have three children: Elizabeth, Andrew and William.

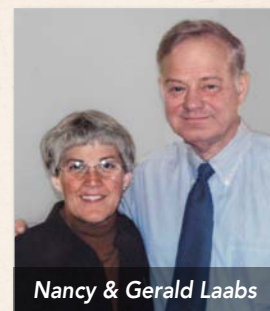
After Jerry's retirement, he and Nancy spent the winter months in Arizona, highlighted by visits from family. They

loved spending time with the grandkids. Jerry spoke of his grandchildren with the same pride and joy that he spoke of his own boys.

After Jerry's passing, Nancy left Black River Falls to be closer to her family, and now enjoys the additional time with her sons, daughter-in-laws and grandchildren.

Community was important to both Jerry and Nancy. Jerry helped set up a number of non-profits in Jackson County including the Black River Child Care Center, Jackson County Interfaith Volunteer Caregivers and the Black River Falls Tennis Association to mention a few. Both were involved in various service organizations to benefit the community. Jerry and Nancy both taught Sunday School at Evangelical Lutheran Church.

Education enabled Jerry and Nancy to pursue careers that were difficult, but rewarding. For this reason, Jay and Katherine have chosen to honor them with an annual scholarship to be awarded to a BRF graduating senior attending UW-Madison. Thank you Jay and Katherine for establishing a Traditional Scholarship Fund.



Nancy & Gerald Laabs



# 2018 SCHOLARSHIPS & RECIPIENTS

A Scholarship Fund created by gifts from individuals, organizations and businesses, awards education grants to selected area students. The following 46 scholarships totaling \$72,000 were awarded in 2018.

## Black River Falls Alumni Association Scholarship (\$1,500)

**Alice Homstad Memorial Scholarship-Year 2 of 2(\$2,500)**

**Nikolas Pardoe**  
(2016 BRF Graduate)

Black River Falls

Attending:

UM Twin Cities –  
College of Science & Engineering

Course of Study: Major-Aerospace  
Engineering and Mechanics; Minor-  
Computer Science

Career Path: NASA



## Black River Falls Alumni Association Scholarship (\$1,500)

**David & Marilyn Hoffman Scholarship (\$2,000)**

**Dean Nortman Memorial Scholarship (\$500)**

**Natalie Gawron**  
(2016 BRF Graduate)

Black River Falls

Attending: UW Green Bay

Course of Study: Human Biology with  
emphasis in exercise science

Career Path: Doctorate in Physical  
Therapy



## Black River Falls Alumni Association Scholarship (\$1,500)

**Kacey Koenigs**  
(2016 BRF Graduate)

Black River Falls

Attending: University  
of St. Thomas

Course of Study:  
Bachelors in  
Accounting &  
Masters of Science in  
Accountancy

Career Path: Auditor at a CPA Firm



## Black River Falls Alumni Association Scholarship (\$1,500)

**Alisanne Dunneisen**  
(2016 BRF Graduate)

Black River Falls

Attending:

UW Whitewater

Course of Study: Major-  
Communication  
Sciences and  
Disorders;

Minor-Family

Career Path: Graduate School



## Black River Falls Area Foundation Annual Senior Scholarship (\$2,000)

**Lauren Perry**

Black River Falls

Attending:

UW La Crosse

Course of Study:

Kinesiology

Career Path:

Doctorate in Physical  
Therapy



## Black River Falls Area Foundation Annual Alumni Scholarship (\$2,000)

**Kate Phillips**

(2005 BRF Graduate)

Black River Falls

Attending: Colorado

State University

Course of Study:

Accounting

Career Path: Certified  
Public Accountant



## Black River Falls Area Foundation Alumni Scholarship (\$2,000)

**Jody Stoker**

(1991 BRF Graduate)

Black River Falls

Attending: Viterbo

Course of Study:

Business

Administration

Career Path: Continue  
in current position as  
BRF EMS Chief with  
hope of advancement



## Black River Falls High School Store Scholarship (\$500)

**Callie Hentsch**

Black River Falls

Attending:

Chippewa Valley  
Technical College

Course of Study:

Radiology

Career Path:

Radiologist  
Technician



## Black River Falls High School Store Scholarship (\$500)

**Duane & Lavina Hoffman Scholarship (\$1,500)**

**Allyson McJoynt**

Black River Falls

Attending:

UM Twin Cities

Course of Study:

Statistics

Career Path: Actuary



## Allan Brenengen Memorial Scholarship (\$1,500)

**Natalie Fischer**

Alma Center

Attending: Winona

State University

Course of Study:

Elementary

Education/Reading

Instructionist

Career Path: Teacher



## Thomas R. Gilles Memorial Scholarship (\$1,000)

**Stephanie Brauner**

Black River Falls

Attending: University

of St. Thomas

Course of Study:

Accounting

Career Path: Career in  
Business/Accountant



## Don Halverson Memorial Scholarship (\$1,500)

**Karli Rickert**

Black River Falls

Attending:

University of Iowa

Course of Study:

Speech & Hearing

– Communication

Sciences & Disorders

Career Path:

Speech therapist at a hospital



## David & Marilyn Hoffman Scholarship (\$2,000)

**Matthew LaFange**  
(2015 BRF Graduate)

Black River Falls

Attending:

UW La Crosse

Course of Study:

Major-Exercise

Sports Science;

Minor-Sport

Management

Career Path: Master's Degree in Sport  
Administration



## David & Marilyn Hoffman Scholarship (\$2,000)

**John Antonelli**  
(2017 BRF Graduate)

Black River Falls

Attending:

UW Madison

Course of Study:

Double Major-

Biology and

Economics

Career Path: Medical School





# 2018 SCHOLARSHIPS & RECIPIENTS

## Duane & Lavina Hoffman Scholarship (\$1,500)

**Jake Ramos**

Black River Falls

Attending:

UW Madison

Course of Study:

Mathematics

Career Path:

Education



## Robert (Knuckles) Johnson Memorial Scholarship (\$1,500)

**Madison Shramek**

Hixton

Attending:

UW La Crosse

Course of Study:

Major-Biology;

Minor-Business

Career Path: Dentist



## Leland & Jeanette Larson Memorial Rotating Scholarship – 2018 Lincoln High School (\$2,000)

**Callie Frey**

Alma Center

Attending: Winona

State University

Course of Study:

Major-Graphic

Design; Minor-Marketing



## Alice Homstad Memorial Scholarship- Year 1 of 2-(\$2,500)

**Matthew Bronsdon**

(2016 BRF Graduate)

Hixton

Attending:

UW Madison

Course of Study:

Double Major–

Spanish and Biology

Career Path:

Medical School



## James Jr. and Anna Klir Memorial Scholarship (\$1,000)

**Natalie Danielson**

(2016 BRF Graduate)

Black River Falls

Attending: UM Duluth

Course of Study:

Major–Music

Education; Minor-

Theatre

Career Path: K-12 Music Educator



## Lions/Rotary Scholarship (\$2,000)

**Tillie Moldenhauer**

Black River Falls

Attending:

UW Madison

Course of Study:

Major-Psychology;

Minor-Spanish

Career Path:

Medical School



## Alice Homstad Memorial Scholarship – 1 Year Award (\$2,000)

**Alisha Quall**

(2017 BRF Graduate)

Black River Falls

Attending:

UW Madison

Course of Study:

Major-Spanish;

Minors in Chicano/a

and Latino/a Studies

and Global Health

Career Path: Medical

School to become a Pediatrician



## Krohn Clinic Physicians Memorial Scholarship (\$2,000)

**Katlyn Leadholm**

Black River Falls

Attending: Viterbo

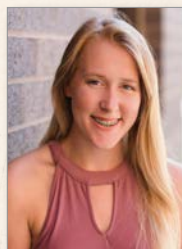
Course of Study:

Registered Nursing

Career Path:

Emergency Room

Nurse



## Ralph & Alice Lund Memorial Scholarship (\$1,000)

**Ethan Anderson**

Black River Falls

Attending:

UW La Crosse

Course of Study:

Finance

Career Path:

Financial Planner/

Advisor – Continue

the family business



## Jackson County Bank Foundation Alumni Scholarship (\$2,000)

**Hailey Collins**

(2016 BRF Graduate)

Black River Falls

Attending:

UW La Crosse

Course of Study:

Major-Business

Management; Minor-

Accounting

Career Path: Owner/

Operator of Photography Business



## Gerald & Nancy Laabs Scholarship (\$2,000)

**Benjamin Bluedorn**

Black River Falls

Attending:

UW Madison

Course of Study:

Undecided



## Kelly Mauck Memorial Scholarship (\$1,500)

**Bailee Ciezki**

Black River Falls

Attending:

UW Marshfield

Course of Study:

Business and

Marketing

Career

Path: Position in

advertising, public

relations, or promotions



## Elizabeth Danielson Janssen Nursing Scholarship (\$2,000)

**Kasey Roskos**

Merrillan

Attending:

UW Oshkosh

Course of Study:

Registered Nursing

Career Path:

Emergency Room

Nurse



## Leland & Jeanette Larson Memorial Scholarship – Taylor (\$2,000)

**McKenna Nehring**

Taylor

Attending:

Western Technical

College

Course of Study:

Liberal Arts



## Philip & Aldena Meyer Memorial Scholarship (\$1,000)

**Sunny Rufsholm**

Black River Falls

Attending: Viterbo

Course of Study:

Choral Music

Education

Career Path:

Vocal Music Director





**Rick Millis Memorial Scholarship**  
(\$2,000 per year for 2 years)

**Kaytlin Johnson**  
Black River Falls  
Attending: Concordia  
University Wisconsin  
Course of Study:  
Radiologic  
Technician



**Rick Millis Memorial Scholarship**  
(\$2,000 per year for 2 years)

**June Brown**  
Alma Center  
Attending:  
UW Oshkosh  
Course of Study:  
Nursing



**Dean Nortman Memorial Scholarship (\$500)**

**Maria Lee**  
(2013 BRF Graduate,  
2017 Graduate of  
UW La Crosse with a  
degree in Exercise &  
Sports Science Pre-  
Professional and a  
minor in Spanish)  
Black River Falls  
Attending:  
Graduate School - UW La Crosse  
Course of Study: Doctorate Degree  
Career Path: Dr. of Physical Therapy



**Dean Nortman Memorial Scholarship (\$500)**

**Olivia Lee**  
(2011 BRF Graduate,  
2015 Graduate  
of UW Oshkosh  
with a Degree in  
Biochemistry)  
Black River Falls  
Attending: Concordia  
University School of  
Pharmacy  
Course of Study: Doctorate of Pharmacy  
Career Path: Residency in a hospital  
setting



**Mary Perry Fine Arts Scholarship (\$1,000)**

**Andrea Peterson**  
Merrillan  
Attending:  
UW Eau Claire  
Course of Study:  
Education  
Career Path:  
Elementary or  
Special Education  
Teacher



**Pearl (Toddy) Porath Memorial Senior Scholarship (\$1,000)**

**Matthew Collins**  
Black River Falls  
Attending:  
Western Technical  
College  
Course of Study:  
Videography  
Career Path:  
Photography/Videography



**Pearl (Toddy) Porath Memorial Senior Scholarship (\$1,000)**

**Kimberly Leadholm**  
Black River Falls  
Attending:  
UW Madison  
Course of Study:  
Journalism  
Career Path: Work for  
a news station to  
create video packages



**Pearl (Toddy) Porath Memorial Alumni Scholarship (\$1,000)**

**Zachary Severson**  
(2016 BRF Graduate)  
Black River Falls  
Attending:  
UW River Falls  
Course of Study:  
Major-Broad Field  
Social Studies;  
Minor-Economics  
Career Path: High School History and  
Economics Teacher and also coach  
High School sports



**Pearl (Toddy) Porath Memorial Alumni Scholarship (\$1,000)**

**Emily Byrns**  
(2017 BRF Graduate)  
Black River Falls  
Attending:  
UW Eau Claire  
Course of Study:  
Journalism  
Career Path:  
Broadcast Journalist



**Meghan Powell Memorial Scholarship (\$1,500)**

**Ricky Lamp**  
Merrillan  
Attending:  
Winona State  
University  
Course of Study:  
Elementary  
Education



**Lt. Terry Preston Memorial Scholarship (\$1,000)**

**Caitlin Smart**  
Black River Falls  
Attending:  
Chippewa Valley  
Technical College  
Course of Study:  
Criminal Justice  
Career Path:  
Potentially work for  
the FBI



**Gene & Judy Ransom Scholarship (\$2,000)**

**Jessica Turk**  
Alma Center  
Attending:  
UW Eau Claire  
Course of Study:  
Art (Emphasis in  
Graphic Design)



**Dustin Rozmenoski Memorial Scholarship (\$1,000)**

**Zakery Smetana**  
Black River Falls  
Attending:  
Western Technical  
College  
Course of Study:  
Internet Technology





# FRIENDS OF THE FOUNDATION RECOGNITION PROGRAM



BLACK RIVER FALLS AREA  
Foundation

Bronze~\$100 Silver~\$500 Gold~\$2,000

Platinum~\$5,000 Diamond~\$10,000

Leaders Circle~\$15,000

Legends Circle~\$20,000 Founders Circle~\$30,000

The Foundation has established a permanent Recognition Program for Friends who have donated so generously through the years. The program allows donation amounts to accumulate each year as Friends advance through eight giving levels.

2017/2018 Friends of the Foundation are listed below, together with the current level of giving they have achieved.

## BRONZE

(\$100 & up)

\* Mona Baker  
\* Anita Damon  
Brad Chown  
James Dingeldein  
Doris Dingeldein  
Mary J. Hansen  
Ruth Hart  
Carl Hermann  
Joan Higgins  
Ann Homstad  
David O. Hoonsbeen  
John Howard  
James Kaphengst  
Jill Kaphengst  
\* Jeanette Kertis  
Rose Ann Klir  
\* Jay Laabs  
\* Katherine Laabs  
\* Barbara Lahmayer  
\* Jean Louis  
Dave Meyer  
Luane Meyer  
Marlene Meyer  
Nyla Musser  
Elaine Ott  
Robert Ott  
Sandra Pistorius  
\* Judy Radcliffe  
Betty Schanz  
Scholze Ace Home  
Center; Dan & Sara  
Scholze  
George Schwab  
Larry Severson  
Shelly Severson  
Timothy Turk

## SILVER

(\$500 & up)

Todd Anderson &  
Family  
William Arndt

Al Barnes  
Black River Area  
Chamber of  
Commerce  
Black River Falls Clinic  
Pharmacy  
Black River  
Chiropractic Clinic  
Duane Bowen  
Mike Brauner  
Georgia Button  
Larry Button  
Ricky Capper  
Wally Capper  
Mary Curtis  
Ron Danielson  
Sheila Danielson  
Annette Dickman  
Mrs. James (Carol)  
Dougherty  
John Drace  
Julie Drace  
Axel Dressler  
Judy Dugan  
Chris Fox  
Lori Fox  
Gerald (Tuffy) Gaier  
Don Galston  
Fred Goettl  
Terri Goettl  
Wayne, Jerry & Mike  
Gross; Gross  
Chevrolet-Buick-  
GMC  
David R. Hagen  
Judy Hansen  
Kristi Hanson  
Mike Hanson  
Carol Haugen  
Mary Hegna  
Dr. Steve Hegna  
Connie Helstad  
Dr. Paul Helstad  
Richard Hilliker  
John Hoagenson  
Alden "Buz" Hoefler  
Joanne Holder

Dr. Richard Holder  
Eric Homstad  
Nomi Homstad  
Nancy Mills Howard  
Peter Jacobs  
Jim Kertis  
Karen Stai-Koenigs  
Insurance Agency  
Bruce Lahmayer  
Jean Lee  
John Lindahl  
Sue Lindahl  
Brad Lobenstein  
Monica Lobenstein  
John Louis  
John Lund  
Dave Mack  
Dr. Carol Martin  
Carla Mills  
Carla (Drecktrah)  
Nielsen  
Ernie Nicholas  
Mary O'Brien  
Lynn Overman  
Dr. Jeff Polzin  
Sue Polzin  
Ray Ransom  
Arlene Reid  
Thomas Reid  
Margaret Rewald  
Paul Ripp  
Theresa Ripp  
Ripp Distributing  
Company  
Lynn Sedelbauer  
Jay Severance  
Mrs. Vern (Margaret)  
Severson  
Kathy Stittleburg  
Todd Stittleburg  
Dr. Jon Stowe  
Julie Stowe  
Marion Stuart  
Glen Tamminen  
Jean Tamminen  
Sherri Torkelson

Tim Torkelson  
Mitch Wester  
Susan Wester  
Mary Beth White-  
Jacobs  
Sara Wiersma  
Alice Young  
Dennis Young

## GOLD

(\$2,000 & up)

Marilyn Ackerson  
Black River Memorial  
Hospital  
Coldwell Banker River  
Valley Realty  
Dr. Donald Delebo  
Dr. James Dickman  
Mike Dougherty  
Cindy Dougherty  
Jean Hagenbrock  
John Hagenbrock  
Dr. Lyle Hart  
Jones Hoffman  
Peter Hoffman  
Dave Hoffman  
Marilyn Hoffman  
John Hogden  
Kari Hogden  
Jon Homstad  
Maureen Homstad  
Dr. Jerry Kitowski  
Lori Kitowski  
Bobbi Kitowski  
Dr. Nicholas Kitowski  
Krohn Clinic  
Dr. Gene Krohn  
Janet Krohn  
Dr. Al Lahmayer  
Jeanette Lahmayer  
Margaret Legois  
Max Michaelson Jr.  
Sue Michaelson  
Mary Nordahl  
Dr. Jerry Overman

Mary Perry  
Gene Ransom  
Judy Ransom  
Dennis Richards  
Norbert Sedelbauer  
Mary Van Gorden  
Roger Wiste  
Thelma Wiste  
The Print Shop; Bill &  
Kathy Potter

## PLATINUM

(\$5,000 & up)

D&S Manufacturing  
Gil Homstad  
Dr. Kirk Lane & Family  
Northern Family  
Farms

## DIAMOND

(\$10,000 & up)

Co-op Credit Union  
Jackson County Bank

## LEADERS CIRCLE

(\$15,000 & up)

## LEGENDS CIRCLE

(\$20,000 & up)

Millis Family

## FOUNDERS CIRCLE

(\$30,000 & up)

\* WELCOME  
1st time Friends!

**THANK YOU  
FOR GIVING!**